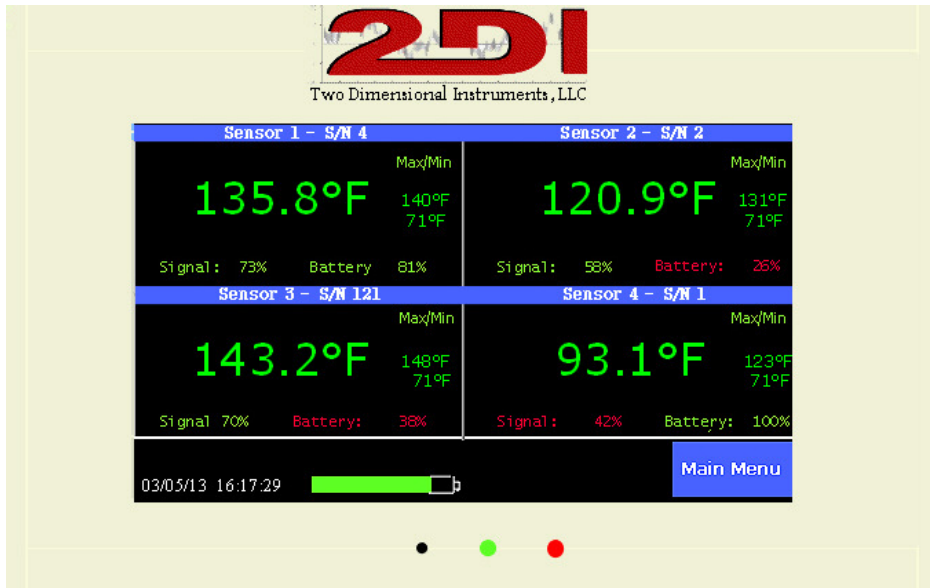




APPLICATION NOTE: 102

ThermaViewer 2

- **4 temperature sensors**
- **Easy to use** (*just touch the screen*)
- **Easy to download to a computer** (*Software included*).
- **Works with any commercial dishwasher**
- **Monitors 24/7.**
- **Stores & shows 80,000 temperature points for each sensor**
- **Text/email or phone call alert**



With each wireless sensor positioned in the area you want to monitor, the temperature is constantly displayed.

The ThermaViewer 2 shows the current temperature, the maximum and minimum temperature and captures a temperature log of each sensor in non-volatile memory. It complies with 21 CFR 11, FDA, CDC standards.

The display is updated every few seconds with real time temperature data

so your operators always know that your water temperatures are within federal and state guidelines.

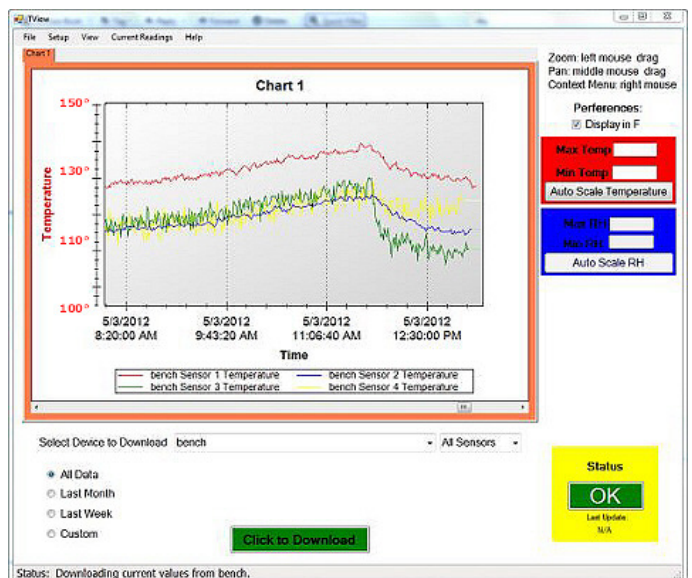
Each sensors temperature log can be viewed on the display (see below) and also constantly downloaded to a computer with a USB cable or over your LAN.

The TView software (PC only) can capture the temperature history in files on your computer for archiving and/or printing. Each file is encrypted and can be electronically signed. It can be printed out as a chart or tabular data for verification and compliance reporting.

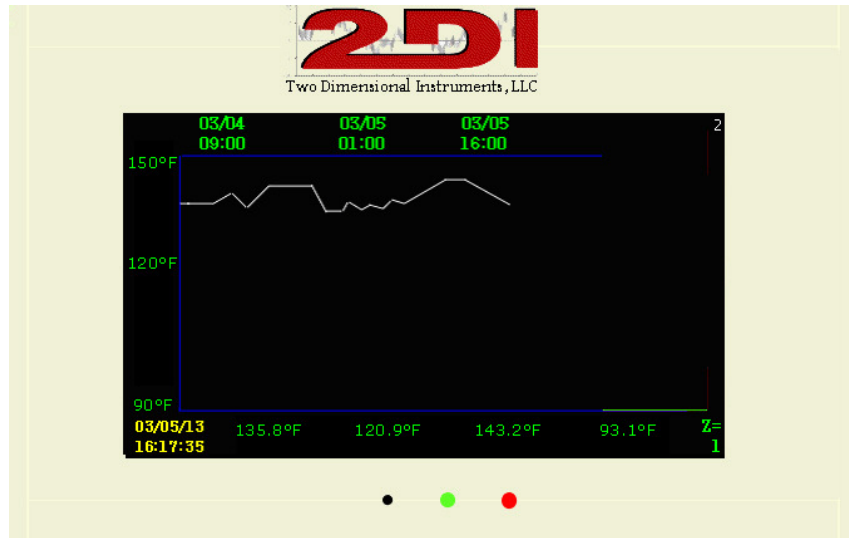
The real time data can also be displayed on computers in the office.

Alarm logs are kept and can be viewed or printed out from computers on your network.

T



APPLICATION NOTE: 102



The temperature history can be viewed on the display itself by touching any temperature. The chart can be scrolled through as well as zoomed out of so that months of data can be seen at one time.

Because the display is easy to read and the chart easy to interpret, each employee becomes part of your quality control effort every time they glance at it. If the temperature was ever unsafe it is immediately obvious.

Temperature logs can be printed out as charts or tabular data for verification and/or troubleshooting from your computer.

Alarms:

1. High temperature alarm (visual, audible, triggers N/O relay)
2. Low temperature alarm (visual, audible, triggers N/O relay)
3. Low sensor battery alarm (visual only)
4. Power missing alarm (visual, audible, triggers N/O relay)
5. Lost communication alarm (logged only)

Redundancy:

1. All data can be kept in the display and on a computer.
2. 48 hour back up battery for power failures
3. Data is stored in non-volatile memory.

Data availability:

1. Real time data on the display and your computer
2. Logged temperature history stored locally in Display
2. Auto downloaded to PC or server
3. Serves a web page to any browser
4. Download over the internet with port forwarding
5. New data rolls over oldest data
6. Can be viewed as a chart and as tabular data
7. PC data can be shown in multiple ways
8. Data can be exported to Excel worksheet

