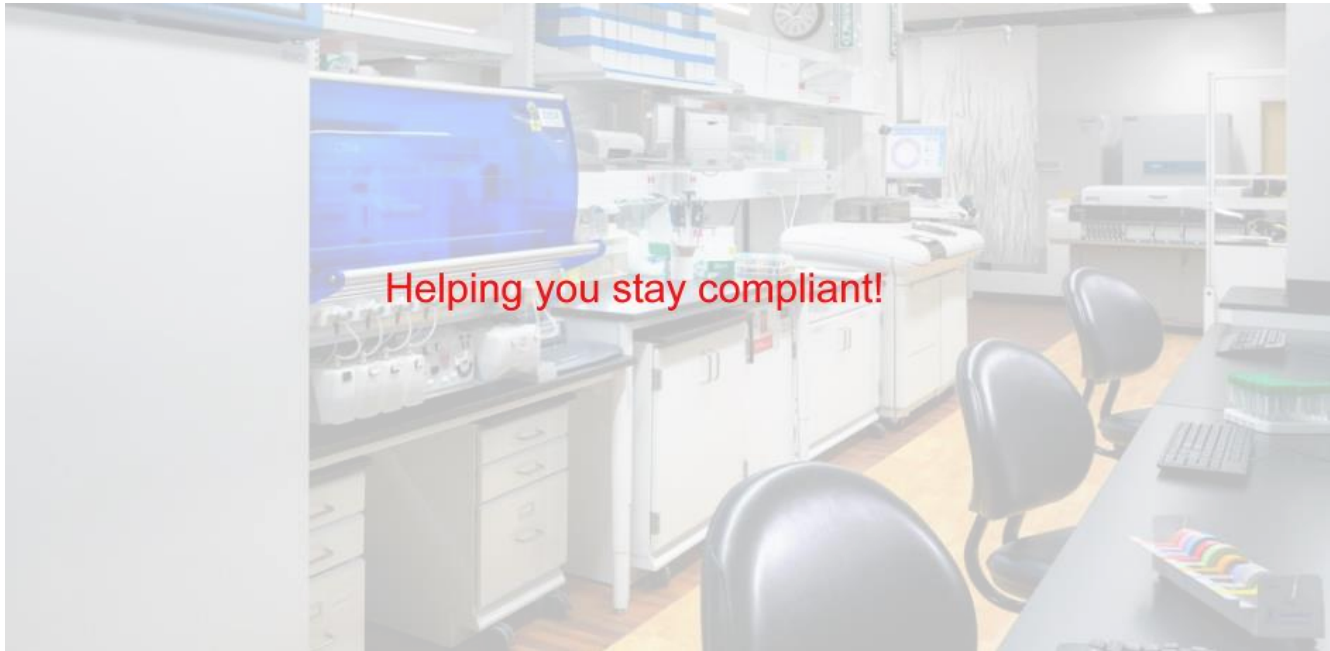


SRMP (IV Room) Environmental Monitor and Logger



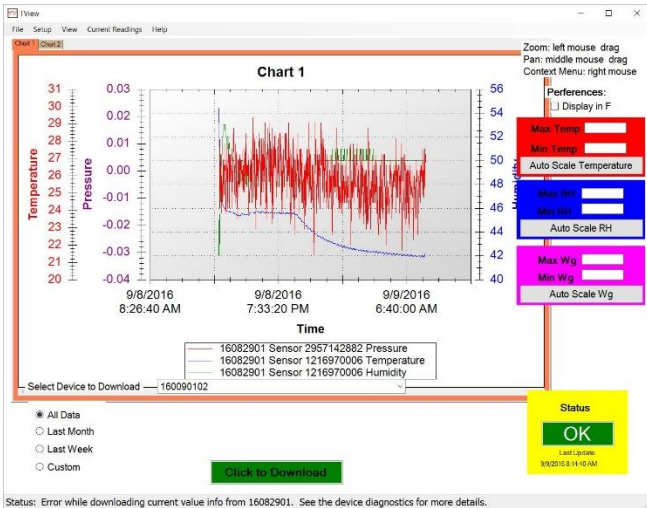
The TV2 Monitor/Alarm is a low-cost highly engineered Pressure, temperature/RH monitor with visual display. It shows the differential pressure between a neutral pressure area and the ante-room as well as the pressure between the ante-room and the cleanroom. It also shows the temperature and humidity in both the ante-room and the cleanroom to help comply with **USP 797 and USP 800**.

The TV2 has a very simple user interface. It is the only low-cost device which monitors, alarms, logs and charts pressure, temperature and humidity data in two areas. In addition to continually displaying current conditions, it also logs all data, so you have a complete history of the critical environments.

The TV2 Easy Touch display shows current and maximum/minimum values as well as a data history charts for each of its remote sensors. All logged data is encrypted to comply with 21 CFR 11 requirements and can be downloaded to a computer with the free [TView PC software](#).



[More Information on the TV2](#)



TV2 can be plugged into a Local Area Network so the logged data can be viewed or printed out as a chart or exported to Excel .

Alerts for non-conforming temperature, humidity or pressures can be sent via email or text or phone call.

Over 80,000 data points for each sensor is logged in the TV2 display itself and protected from power failures with an internal 100-hour back-up battery and non-volatile RAM memory.

Specifications:

Monitor

Four Channels	2 Differential pressure sensors 2 Temperature/RH sensors
Quick Check Display	<ol style="list-style-type: none"> 1. Current Condition 2. Max Min for each sensor 3. Alarm enabled/disabled 4. Date and time 5. Ethernet connection 6. Full Color coded for 'Red for unsafe' and 'Green for Safe' 7. Password protected menu system
Display Resolution	0.1°F, 1%RH, 0.001"WG. (0.0001 on PC)
Sample Interval	Once every 4 seconds for each sensor
Logging interval	User selectable (Once a minute to once every 24 hours)
Sensors	
Temperature	-20°C to 80°C (±0.30°C)
Humidity	RH 0% to 100% (±3.0% w 0.5% Repeatability)
Pressure	-1.000wg” to +1.000wg” (±0.002wg”)
Technical Stuff	
Alarms	<ol style="list-style-type: none"> 1. Audio, visual 2. Optional strobe/siren 3. Optional auto dialer 4. Text alert 5. Email alert
Calibration	Optional NIST traceable



Characterization	One-three-point calibration table
Data Storage Technique	100 hr internal battery backed-up non-volatile RAM
Non-volatile memory	80,000 samples per channel
Power	Via USB cable to wall plug or PC 3.5VDC UL & CE marked
Ethernet Network	RJ45 connector
PC interface	USB
PC Software	Site license included
Indicators	Red, Green LEDs
Monitor size	8 3/8" x 5" x 1 3/8"
Controls	Easy touch LCD display responds to a finger touch
User Setting	On board password-protected menu
LCD Pixels	480 X 272
LCD temperatures	Operating 0° to 50°C, Storage -20° to 68°C
LCD Size	2.5" x 4.5"
LED	Green indicates AC power present
Relay	N/O dry contact terminal <30v fused for .5 amps
Mounting	Wall mount – Industrial Velcro
Display weight	1 lb