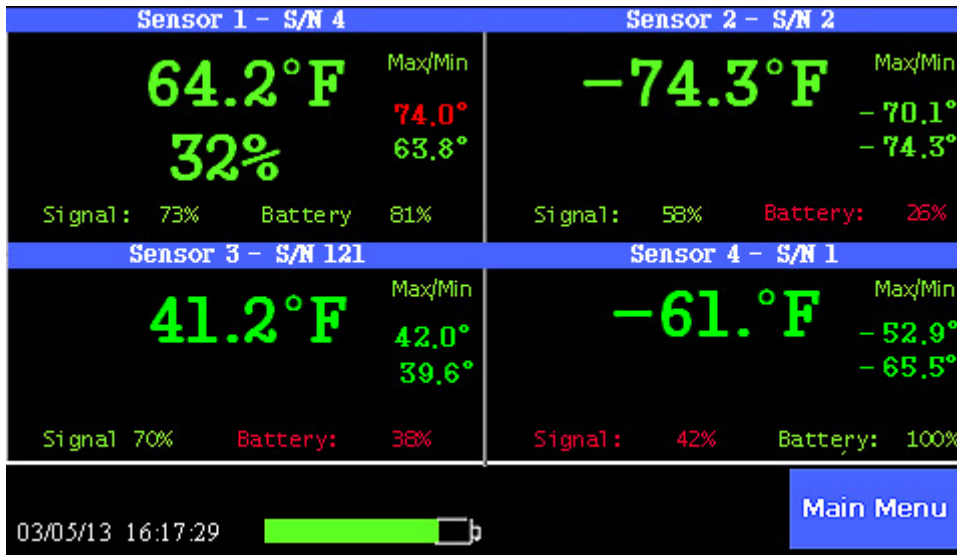




TV2 Product Summary

TV2 Refrigerator Monitor/Alarm with Easy Touch™

- **Easy to install** (*installs in minutes*).
- **Easy to use** (*easy to read chart*).
- **Easy to download to a computer** (*cable & software included*).
- **Works with any refrigerator and/or freezer.**
- **Stores & displays 1.5 years of temperature history.**
- **Phone call or email alert**

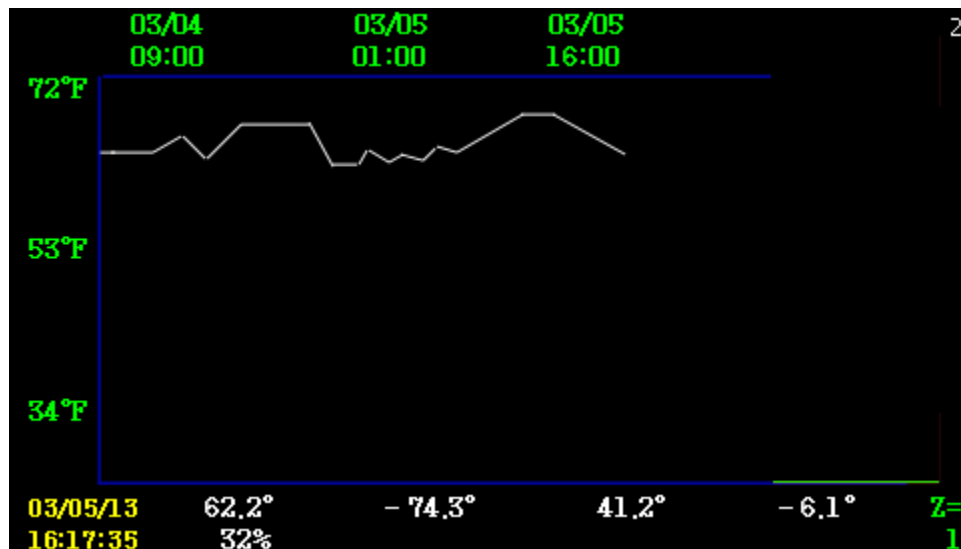


Place the sensors inside four refrigerators or freezers and you will have a temperature history for each one of them.

Set the high - low alarm points for each freezer or refrigerator and you will be notified if any temperature becomes unsafe.

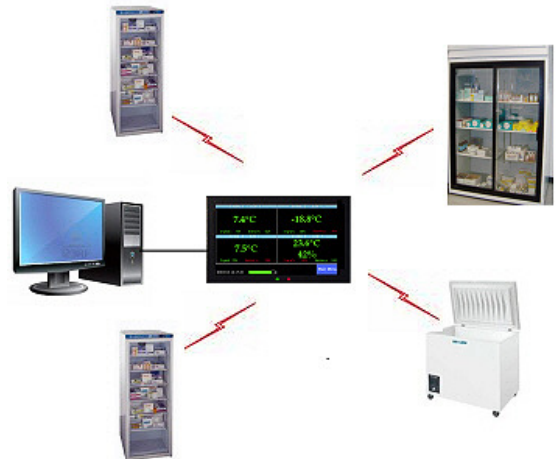
It complies with 21 CFR 11 and JCAHO standards storing over a year of temperature history that can be downloaded to a computer for a printed chart.

The display shown above is the status screen showing current conditions for each of the four cold storage units as well as the maximum and minimum temperatures. Just touch any of the temperatures on the display and a chart will appear which shows what happened last night, and last week, and last month and last year.



TV2 Product Summary

Because the display is easy to read and the chart easy to interpret, each employee becomes part of your quality control effort every time they glance at it. If the temperature was ever unsafe it is immediately obvious.



Setup

The following are suggested settings.

Suggested settings for -20°C Freezer and a 4°C Refrigerator:

Freezer Probe #1	
Sample data every 00:10:00 HHMMSS	
Type of averaging: Med	
Maximum Display Temperature	- 5°C
Minimum Display Temperature	-25°C

Refrigerator Probe #2	
Sample data every 00:10:00 HHMMSS	
Type of averaging: Med	
Maximum Display Temperature	20°C
Minimum Display Temperature	-20°C

Alarm Settings:

Sensor 1 – Temperature	
Trigger relay for 00:25 MM:SS	
If temperature > 5° for more than 00:30:00 HHMMSS	
If temperature < -30° for more than 00:20:00 HHMMSS	

Sensor 2 – Thermistor	
Trigger relay for 00:25 MM:SS	
If temperature > 8° for more than 00:30:00 HHMMSS	
If temperature < 2° for more than 00:20:00 HHMMSS	

The alarm: In addition to the temperature alarm the **power failure alarm** will also sound (if enabled) and close the relay if the unit is operating on battery power.

Downloading data:

The ThermaViewer will hold and chart approximately 1.5 years of temperature history for each sensor with the above settings. If you plug the USB cable from the TV2 into your computer you can setup an autownload to copy the collected temperatures to your computer. From there charts can be printed and any alarms written to an alarm log.